

No.	Circuit
1	Refrigerator
2	AC Unit
3	Disposal
4	AC Unit
5	Dishwasher
6	Bdrm Recept (AFCI)
7	Kitch Recept
8	Bath 1 Recept
9	Kitch GFI Recept
10	A/V Equipment (NEW)
11	Living Rm Recept
12	Bath 2 Recept
13	Washing Machine
14	LV Panel (New)
15	Dryer 20A
16	Lighting
17	Dryer 20A
18	-
19	Microwave
20	Wash/Dryer 208 30A
21	Stove
22	Wash/Dryer 208 30A
23	-
24	-

LAYER LEGEND:

- Existing Walls and Fixtures
- New Walls
- Furniture
- Existing Electrical Outlets and Switches (with Circuit Breaker Numbers)
- New Electrical & Low-Voltage Outlets (with Circuit Breaker Numbers)
- New Lighting and Switches (with Circuit Breaker Numbers)
- New Lighting Dimensions
- New Lighting Circuiting
- New Audio / Video

ELECTRICAL LEGEND:

- 6" Recessed Downlight (Halo H7RT or Equiv) (Lamping to be Specified)
- Recessed 4" Downlight (Halo H99RT or Equiv) (Lamping to be Specified)
- Recessed 4" Lito LH1499R w/Elite B1406 Trim 75MR16
- Pendant Fixture (As Specified by Interior Designer)
- Track Fixture (As Specified by Interior Designer)
- Under-Counter Low Voltage LED Puck Light (Plugged Into Outlet)
- Electronic Remote System Dimmer (Control4)
- Lighting Control Keypad (Control4)
- New 20A 120V AC Outlet
- Existing Fixtures
- Existing Switches
- Existing Outlets

REVISIONS	
30	Chng Lighting per John Sofio

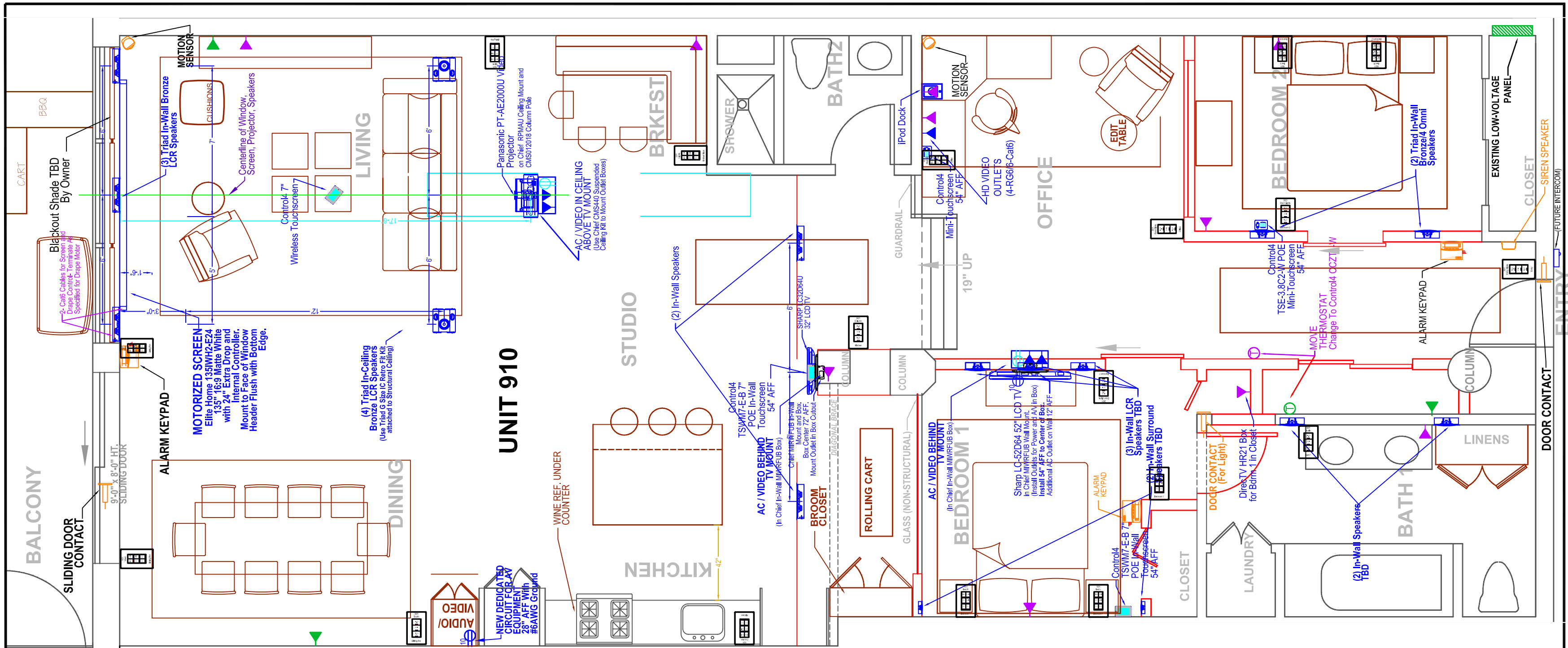
CHARM AND IMAGINATION
 4872 TOPANGA CANYON BOULEVARD
 SUITE #308
 WOODLAND HILLS, CA 91364
 (818) 887-3303
 FAX: (818) 887-0590
 ORRINCHARM@ATT.NET

COPYRIGHT NOTICE: THIS DRAWING IS THE PROPERTY OF ORRIN CHARM. ALL INFORMATION CONTAINED SHALL BE CONFIDENTIAL. THIS DRAWING MAY NOT BE REPRODUCED OR COPIED WITHOUT WRITTEN PERMISSION.
 COPYRIGHT 2008 ORRIN CHARM

BROADWAY-HOLLYWOOD LOFTS

UNIT 910 ELECTRICAL PLAN

DATE: 7/11/2008
SCALE: 1/4" = 1'-0"
DRAWN: OC
APPR:
JOB: Broadway 910 / 911
QA:
REV. 37
DRAWING NO: E-3



LOW VOLTAGE LEGEND:

- ▲ Multi-Media Outlet (Telephone/Data/Video) (3-RG6/3-Cat6)
- ▶ HDTV Outlet (4-RG6/6-Cat6)
- ▶ HDTV Outlet w/ AC Power (4-RG6/6-Cat6/1-HDMI)
- ▶ Control4 Wall-Mount 7" Touchscreen (Cat6/4c16) (Wireless as Noted)
- ▶ Control4 Mini-Touchscreen (Cat6)
- ▶ iPod Dock (3-Cat6/3 RG6)
- ▶ Triad Ceiling Speaker / In-Wall Speaker (Cat6/4c16)
- ▶ In-Wall Speaker (Cat6/4c16)
- ▶ Security Magnetic Contact
- ▶ Other Devices As Labeled On Drawings

LAYER LEGEND:

- Existing Walls and Fixtures
- New Walls
- Furniture
- Existing Electrical Outlets and Switches (with Circuit Breaker Numbers)
- New Electrical & Low-Voltage Outlets (with Circuit Breaker Numbers)
- New Lighting and Switches (with Circuit Breaker Numbers)
- New Lighting Dimensions
- New Lighting Circuiting
- New Audio / Video

REVISIONS

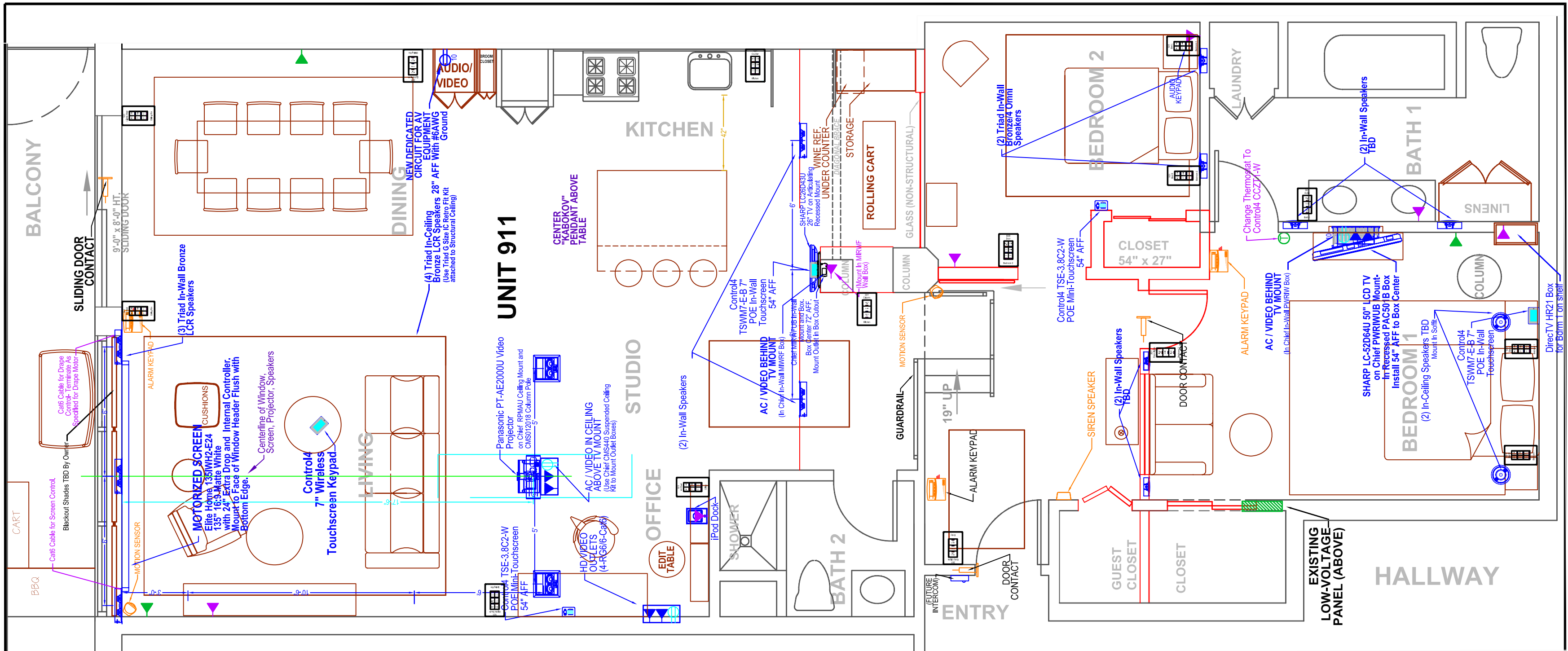
CHARM AND IMAGINATION
 4872 TOPANGA CANYON BOULEVARD
 SUITE #308
 WOODLAND HILLS, CA 91364
 (818) 887-3303
 FAX: (818) 887-0590
 ORRINCHARM@ATT.NET

COPYRIGHT NOTICE: THIS DRAWING IS THE PROPERTY OF ORRIN CHARM. ALL INFORMATION CONTAINED SHALL BE CONFIDENTIAL. THIS DRAWING MAY NOT BE REPRODUCED OR COPIED WITHOUT WRITTEN PERMISSION.
 COPYRIGHT 2008 ORRIN CHARM

BROADWAY-HOLLYWOOD LOFTS

UNIT 910 LOW VOLTAGE DEVICE PLAN

DATE: 7/11/2008	
SCALE: 1/4" = 1'-0"	
DRAWN: OC	
APPR:	
JOB: Broadway 910 / 911	
QA:	
REV. 37	DRAWING NO: AV-1



LOW VOLTAGE LEGEND:

- ▲ Multi-Media Outlet (Telephone/Data/Video) (3-RG6/3-Cat6)
- ▶ HDTV Outlet (4-RG6/6-Cat6)
- ▶ HDTV Outlet w/ AC Power (4-RG6/6-Cat6/1-HDMI)
- Control4 Wall-Mount 7" Touchscreen (Cat6/4c16) (Wireless as Noted)
- Control4 Mini-Touchscreen (Cat6)
- iPod Dock (3-Cat6/3 RG6)
- Triad Ceiling Speaker / In-Wall Speaker (Cat6/4c16)
- In-Wall Speaker (Cat6/4c16)
- Security Magnetic Contact
- Other Devices As Labeled On Drawings

LAYER LEGEND:

- Existing Walls and Fixtures
- New Walls
- Furniture
- Existing Electrical Outlets and Switches (with Circuit Breaker Numbers)
- New Electrical & Low-Voltage Outlets (with Circuit Breaker Numbers)
- New Lighting and Switches (with Circuit Breaker Numbers)
- New Lighting Dimensions
- New Lighting Circuiting
- New Audio / Video

REVISIONS

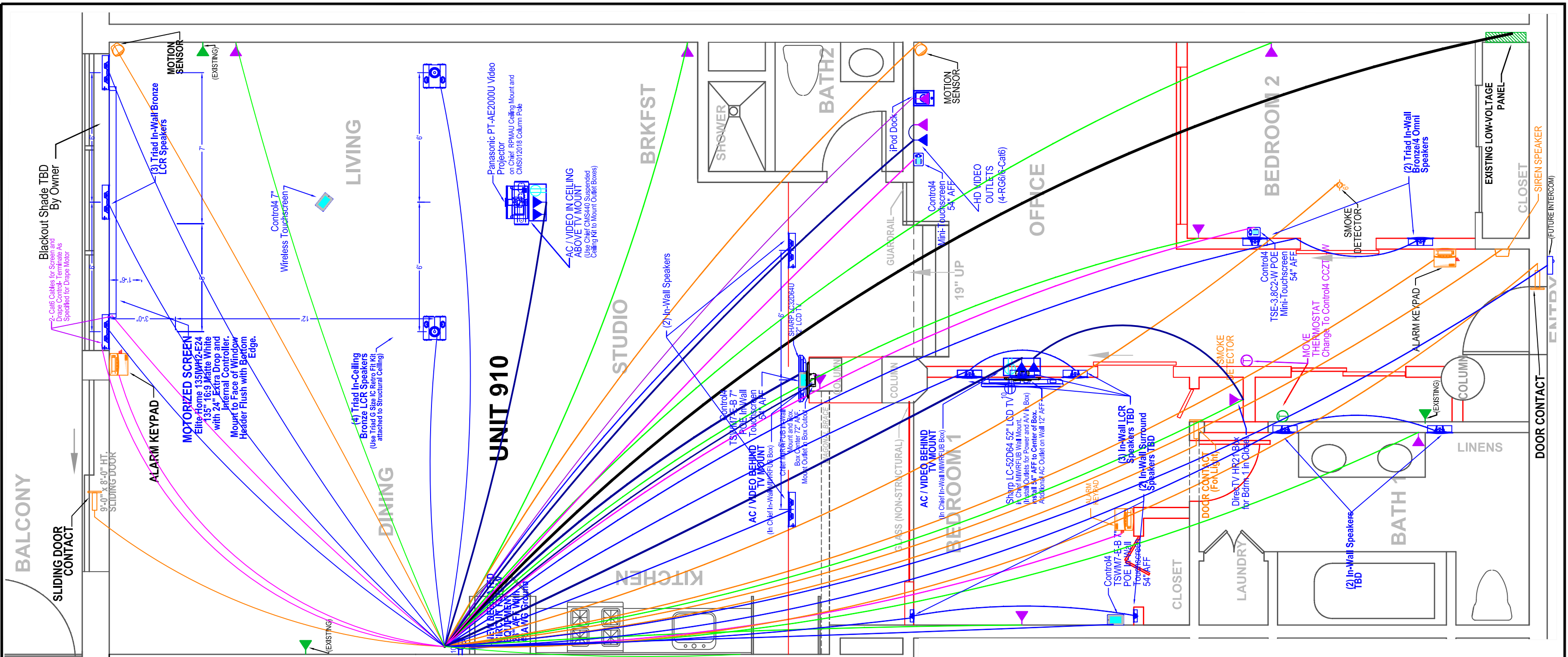
CHARM AND IMAGINATION
 4872 TOPANGA CANYON BOULEVARD
 SUITE #308
 WOODLAND HILLS, CA 91364
 (818) 887-3303
 FAX: (818) 887-0590
 ORRINCHARM@ATT.NET

COPYRIGHT NOTICE: THIS DRAWING IS THE PROPERTY OF ORRIN CHARM. ALL INFORMATION CONTAINED SHALL BE CONFIDENTIAL. THIS DRAWING MAY NOT BE REPRODUCED OR COPIED WITHOUT WRITTEN PERMISSION.
 COPYRIGHT 2008 ORRIN CHARM

BROADWAY-HOLLYWOOD LOFTS

UNIT 911 LOW-VOLTAGE DEVICE PLAN

DATE: 7/11/2008	
SCALE: 1/4" = 1'-0"	
DRAWN: OC	
APPR:	
JOB: Broadway 910 / 911	
QA:	
REV. 37	DRAWING NO: AV-2



LOW VOLTAGE LEGEND:

- ▲ Multi-Media Outlet (Telephone/Data/Video) (3-RG6/3-Cat6)
- ▶ HDTV Outlet (4-RG6/6-Cat6)
- ▶ HDTV Outlet w/ AC Power (4-RG6/6-Cat6/1-HDMI)
- ▶ Control4 Wall-Mount 7" Touchscreen (Cat6/4c16) (Wireless as Noted)
- ▶ Control4 Mini-Touchscreen (Cat6)
- ▶ iPod Dock (3-Cat6/3 RG6)
- ▶ Triad Ceiling Speaker / In-Wall Speaker (Cat6/4c16)
- ▶ In-Wall Speaker (Cat6/4c16)
- ▶ Security Magnetic Contact
- Other Devices As Labeled On Drawings

LOW VOLTAGE CABLE LEGEND:

- 3-RG6/3-Cat6 (Multimedia Telephone/Data/Video Outlets)
- 4-RG6/6-Cat6/HDMI Cable (HDTV Outlets)
- 6-RG6/6-Cat6 (Existing LV Panel)
- Cat6/4c16 (Speakers and Touch Panels)
- 4c22 Security Cable (Security Devices and Contacts)
- Single Cat6 Cable (Drapes, Screen, Security Keypads, Thermostat)
- Dual Cat6 (iPort iPod Dock)

INSTALLATION NOTES:

- > All Low Voltage cables run to wall at top of Audio/Video Cabinet, except cables between speakers and volume controls in bedrooms. Cat6 and RG6 cables will terminate on patch panels in the A/V cabinet. All cables must be terminated and tested. See A/V Cabinet Drawings for installation details.
- > All low Voltage cables must be kept at least 12" from line voltage cabling, or cross at a 90° angle, except when they terminate in a common location, where they must be separated as much as possible.
- > All cables must be labeled at both ends, and properly supported inside ceiling space. Cables may not be spliced- any damaged cables must be replaced.

REVISIONS

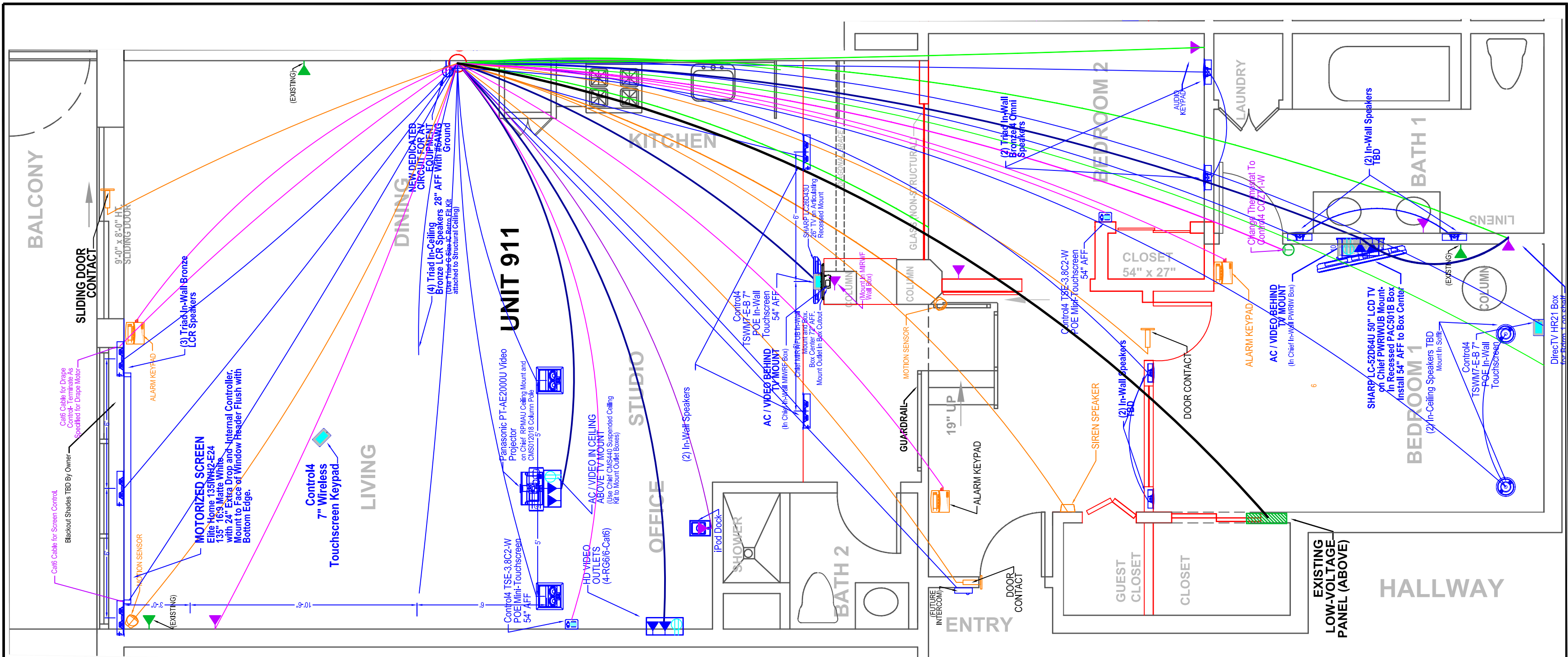
CHARM AND IMAGINATION
 4872 TOPANGA CANYON BOULEVARD
 SUITE #308
 WOODLAND HILLS, CA 91364
 (818) 887-3303
 FAX: (818) 887-0590
 ORRINCHARM@ATT.NET

COPYRIGHT NOTICE: THIS DRAWING IS THE PROPERTY OF ORRIN CHARM. ALL INFORMATION CONTAINED SHALL BE CONFIDENTIAL. THIS DRAWING MAY NOT BE REPRODUCED OR COPIED WITHOUT WRITTEN PERMISSION. COPYRIGHT 2008 ORRIN CHARM

BROADWAY-HOLLYWOOD LOFTS

UNIT 910 LOW-VOLTAGE WIRING PLAN

DATE: 7/11/2008
SCALE: 1/4" = 1'-0"
DRAWN: OC
APPR:
JOB: Broadway 910 / 911
QA:
REV. 37 DRAWING NO: LV-1



LOW VOLTAGE LEGEND:

- ▲ Multi-Media Outlet (Telephone/Data/Video) (3-RG6/3-Cat6)
- ▶ HDTV Outlet (4-RG6/6-Cat6)
- ▶▶▶ HDTV Outlet w/ AC Power (4-RG6/6-Cat6/1-HDMI)
- ▶ Control4 Wall-Mount 7" Touchscreen (Cat6/4c16) (Wireless as Noted)
- ▶ Control4 Mini-Touchscreen (Cat6)
- ▶ iPod Dock (3-Cat6/3 RG6)
- ▶ Triad Ceiling Speaker / In-Wall Speaker (Cat6/4c16)
- ▶ In-Wall Speaker (Cat6/4c16)
- ▶ Security Magnetic Contact
- Other Devices As Labeled On Drawings

LOW VOLTAGE CABLE LEGEND:

- 3-RG6/3-Cat6 (Multimedia Telephone/Data/Video Outlets)
- 4-RG6/6-Cat6/HDMI Cable (HDTV Outlets)
- 6-RG6/6-Cat6 (Existing LV Panel)
- Cat6/4c16 (Speakers and Touch Panels)
- 4c22 Security Cable (Security Devices and Contacts)
- Single Cat6 Cable (Drapes, Screen, Security Keypads, Thermostat)
- Dual Cat6 (iPort iPod Dock)

INSTALLATION NOTES:

- > All Low Voltage cables run to wall at top of Audio/Video Cabinet, except cables between speakers and volume controls in bedrooms. Cat6 and RG6 cables will terminate on patch panels in the A/V cabinet. All cables must be terminated and tested. See A/V Cabinet Drawings for installation details.
- > All low Voltage cables must be kept at least 12" from line voltage cabling, or cross at a 90° angle, except when they terminate in a common location, where they must be separated as much as possible.
- > All cables must be labeled at both ends, and properly supported inside ceiling space. Cables may not be spliced- any damaged cables must be replaced.

REVISIONS

CHARM AND IMAGINATION

4872 TOPANGA CANYON BOULEVARD
SUITE #308
WOODLAND HILLS, CA 91364

(818) 887-3303
FAX: (818) 887-0590
ORRINCHARM@ATT.NET

COPYRIGHT NOTICE: THIS DRAWING IS THE PROPERTY OF ORRIN CHARM. ALL INFORMATION CONTAINED SHALL BE CONFIDENTIAL. THIS DRAWING MAY NOT BE REPRODUCED OR COPIED WITHOUT WRITTEN PERMISSION.
COPYRIGHT 2008 ORRIN CHARM

BROADWAY-HOLLYWOOD LOFTS

UNIT 911 LOW-VOLTAGE WIRING PLAN

DATE: 7/11/2008
SCALE: 1/4" = 1'-0"
DRAWN: OC
APPR:
JOB: Broadway 910 / 911
QA:
REV. 37
DRAWING NO: LV-2